

Inishowen
Rivers
Trust

Connecting Communities,
Valuing Our Waters & Wildlife

WHAT'S HAPPENING on Inishowen rivers

A selection of
community projects from
around the peninsula



ECO CARN ACTION AGAINST INVASIVES

In 2022, the ECO Carn network took their first steps into action against invasive species in Carndonagh through a series of workshops & action events



We set up a QR code to allow the public to help us **map invasive species** in Carndonagh

For more information, contact ECO Carn on their facebook page or call IDP on 0749362218



WORKSHOPS & EVENTS

We ran two workshops and two action events focusing on the top two invasive species - Himalayan Balsam & Japanese Knotweed.



Himalayan Balsam bashing along the Donagh River



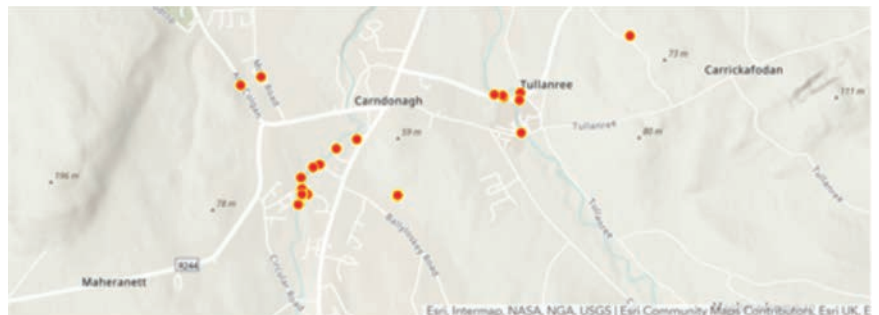
Treating Japanese Knotweed with organic compost



INFORMING & ENGAGING



We received national press coverage on our efforts to deal with invasive species using natural and organic methods. Our next step is to erect signage raising awareness on invasive species & encouraging non-chemical treatments. Further action events will run in Spring & Summer 2023



Map courtesy of Inishowen Rivers Trust showing location of Japanese Knotweed & Himalayan Balsam, particularly present along the Donagh & Glenagannon Rivers

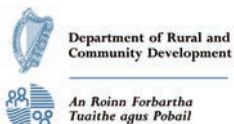


Có-mhainithe ag an Aontas Eorpach
Co-funded by the European Union



Rialtas na hÉireann
Government of Ireland

"The Social Inclusion and Community Activation Programme (SICAP) is co-funded by the Government of Ireland, through the Department of Rural and Community Development, and the European Union"



The European Agricultural Fund for Rural Development:
Europe investing in rural areas



STAR AWARD WINNERS 2019

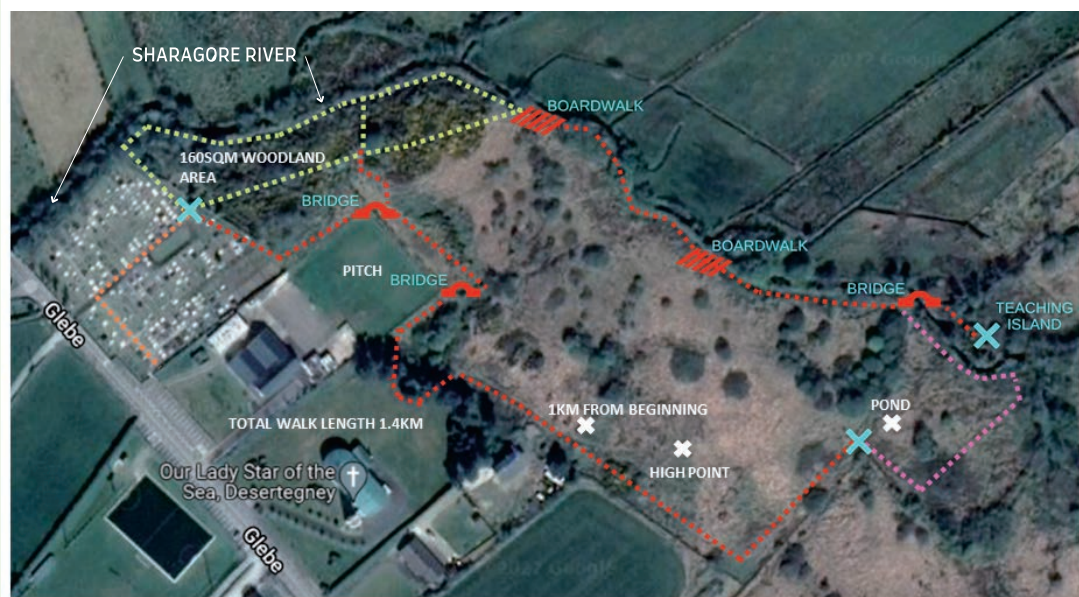
Registered Charity No: 20067786 CO.REG. 447893 CHY17949



Sharagore WETLAND TRAIL

The Sharagore Wetland Trail is located in Desertegney around 8km from the nearest town of Bunclara. This project involves the creation of a path network to facilitate access by the community and to enhance the site from an environmental education point of view.

Phase 1 of the project consists of creating 560m of trail to challenging access standard which will allow access for wheelchair users. It includes the installation of bridges and boardwalks and a water management system. It also includes an additional 230m trail development at grade 3 standard. Trail furniture & signage will improve the user experience.



NOTES

- Proposed challenging access trail. Part of project phase 1
- Project phase 1 trail development
- Project phase 2 trail development. This is the wettest area so will require boardwalks throughout.

Maps Google map data © 2022

The site has been abandoned for 60 years and requires some management to enhance the habitat and prevent the wetland from drying out. Invasive species will be removed where possible. A woodland area will be created. Wildflower meadows will continue to be enhanced. Bird & bat boxes will be installed.



Bird's foot trefoil



Knapweed



Garden Tiger



White Ermine

The site is rich with biodiversity. Surveys have been carried out over the last 3 years by Wild Inishowen and students of St Egnay's National School to capture some of the species present.

Wild Inishowen

PRESERVATION, CONSERVATION & EDUCATION

Ár dTodhchái Tuaithe
Our Rural Future



An Roinn Forbartha Tuaithe agus Pobail
Department of Rural and Community Development



Tionscadal Éireann
Project Ireland
2040

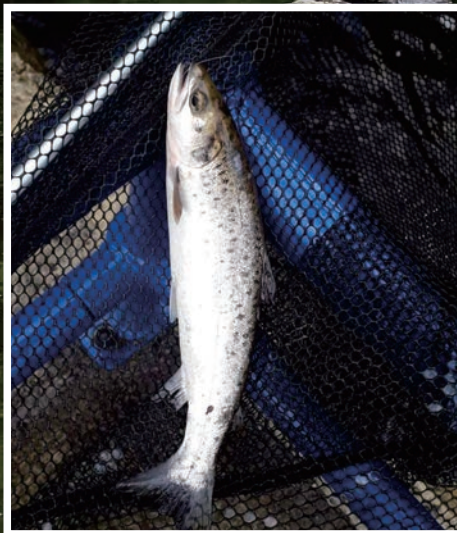
Local Authority
Waters Programme

vibrant communities | catchment assessment | healthy waters

THE BUNCRANA ANGLERS ASSOCIATION



Monitoring Fish Spawning



Promoting Safe Angling Practices.



Protecting in Stream Habitat.

Find us at the Angling Centre, Cahir O'Doherty Avenue, Bunrana, F93 WP78. Tel: 074 93 63733



**Comhairle Contae
Dhún na nGall**
Donegal County Council



Iascach Intíre Éireann
Inland Fisheries Ireland





The Inishowen Uplands European Innovation Partnerships ultimate aim is to increase farm profitability to ensure that the farming activity that is carried out is contributing to overall farm income, not a drain on it. In addition, the aim is to demonstrate that this can be achieved in delivering on climate change, biodiversity and water quality. This will be achieved through the implementation of 5 measures across our 25 farms in Inishowen

Our measures and what we have achieved so far:

1. Agroforestry

- 6600 trees planted so far with more to come.
- 1100 metres of hedging planted.
- 150 native Irish pine trees planted over the spring

2. Diverse swards

- 59.5 ha diverse sward sown reduction in input costs as clover will fixate nitrogen whilst chicory and plantain will improve soil structure improving water infiltration

3. Red clover

- 6ha of red clover swards sown less fertiliser usage whilst improving the quality of the crop produced.

4. Upland cattle

- 170 cattle in the uplands increases the grazing platform for the farmer, decreases the fire risk from Molinia grasses and over grown woody heather, this in turn will improve the upland areas for upland farm birds which are currently under threat.

5. Farm ponds

- 26 ponds created across 19 farms improving biodiversity, silt traps and providing a flood mitigation measure in the upland areas.



Inishowen Uplands EIP, Drumfries, Inishowen, Co. Donegal F93 N793
Tel: 087 338 1548 Email: inishoweneip@gmail.com
www.inishoweneip.com



An Roinn Tithíochta,
Rialtais Áitiúil agus Oidhreacht
Department of Housing,
Local Government and Heritage



Ireland's European Structural and
Investment Funds Programmes
2014-2020

Co-funded by the Irish Government
and the European Union



Wellbeing from Nature

Wellbeing from Nature is the international LEADER (“Liaison Entre Actions de Développement de l’Économie Rurale”) EU project in common with Seinäjoki University of Applied Sciences (SeAMK) from South Ostrobothnia, Finland and Gozo Action Group from Gozo, Malta.

Started February 2021 and finished in January 2023, Wellbeing from Nature is a knowledge exchange and community building project in the areas of green care, nature induced wellbeing and eco-tourism. In Inishowen the project has brought together groups, businesses, and individuals with an interest in the connectedness and serenity that the Inishowen landscape can bring, supporting them to work collaboratively on projects to invite more people to share their positive outdoor experiences and the benefits for mental health.

The Wellbeing from Nature network brought together groups, businesses, and individuals with an interest in the connectedness and serenity that the Inishowen landscape can bring, supporting them to work collaboratively on projects to invite more people to share their positive outdoor experiences.

For the 56 participants to the information gathering on nature and its place the priorities of the wider network were

- Using our natural assets for wellbeing services
- Understanding more about nature and wellbeing
- Co-operation with other groups
- Marketing and new services or products



Figure 3 Leave no Trace Training



Figure 4 Leave no Trace Training



Figure 5 Art en Plein Air



Figure 6 International visitors in Inishowen

If you would like to know more about this IDP project contact

Rachel: rachel@inishowen.ie
or Denise: denise@inishowen.ie



Riailtas na hÉireann
Government of Ireland



Tionscadal Éireann
Project Ireland
2040



Ar dTodhchaí
Tuaithe
Our Rural
Future



The European Agricultural Fund
for Rural Development:
Europe investing in rural areas



LCDC
Comhairle na nGall
Donegal Local Community Development
Committee



Comhairle Contae
Dhún na nGall
Donegal County Council



IDP
Inishowen
Development
Partnership



K.N.O.T
 KNOTWEED NOVEL
 ORGANIC TREATMENT

KPM SOILS

Regenerative Solutions



- We have developed a new organic treatment for Japanese knotweed using a microbially active compost and foliar spray
 - 10 tonnes compost made to date using locally sourced ingredients
 - 6 sites are being treated with ongoing monitoring throughout this year
 - New habitat being created on each site with hundreds of trees planted
 - Soil samples taken at each site before and after treatment, analysed for biology using microscopy
- Further work 2023 will also see:**
- Japanese knotweed treatment rolled out to additional sites
 - Soil biology analysis service available to landowners
 - Microbial compost, extracts and sprays available to regenerate farmland



KPM Soils – 00353 87 744 1190 E: info@kpmsoils.ie



An Roinn Caiteachais
 Phoiblí agus Athchóirithe
 Department of Public
 Expenditure and Reform



**Comhairle Contae
 Dhún na nGall**
 Donegal County Council



OPW Oifig na
 nOibreacha Poiblí
 Office of Public Works



*KNOT is funded by the Department of Public Expenditure and Reform through their Public Services Innovation Fund as well as Donegal County Council, Local Authority Water Programme with support from Office of Public Works and Inishowen Rivers Trust.



LOCAL COMMUNITY ENVIRONMENT CONSERVATION GROUP FOR THE MILL RIVER BUNCRANA



OUR GOALS:

- Protection of our instream fish and European Eel species
- Monitoring and sampling our local catchment
- Providing education for our river species & biodiversity
- Promoting nature & climate actions and solutions



WWW.THEMILLRIVERCONSERVATIONGROUP.COM



T: (+353) 087 090 0862 E: themillriverconservationgroup@gmail.com



Funded By





Inish Forestry

Woodland Consultant offering a full range of forestry services and environmental project work.

E: inishforestry@gmail.com
www.facebook.com/inishforestry



Full range of woodland consultancy services including grants for conversion of conifer to native woodland, and pond creation.



Natural Flood Management - delivery of Ireland's first leaky dam project.



Wet Woodlands - treatment of farm pollution using ponds/wetlands/trees.



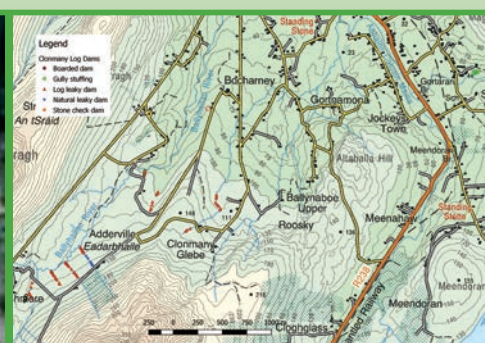
Native Woodland Creation with pond.



Project Partner - Agroforestry consultant Inishowen Uplands European Innovation Partnership.



Reduction of silt release to Inishowen waterways using low-impact woodland harvesting (including woodchip production for KPM Knotweed Project) using Logbullet mini-forwarder from Finland



Mapping Services for various projects

ACRES

DONEGAL

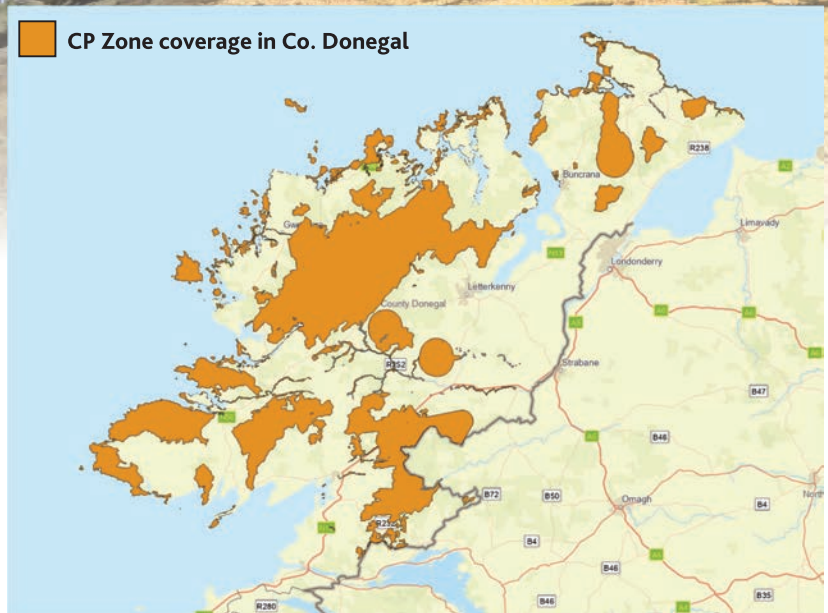
CO-OPERATION PROGRAMME

Tacaíonn Clár Acres i nDún na nGall le feirmeoirí laistigh de limistéar an chomharchumainn feirmeoireacht inbhuanaitheach a dhéanamh agus gníomhaíocht a dhéanamh i gcás bithéagsúlachta, uisce agus aeráide. A oiread leasa agus is féidir a bhaint as íocaíochtaí bunaithe ar thorthaí chun an timpeallacht a fheabhsú.

The ACRES Donegal Co-operation team supports farmers within the co-operation area to farm sustainably and deliver for biodiversity, water and climate. Maximising results based payments and actions to improve the environment.

The ACRES Co-operation approach will be available to farmers in defined high priority geographical areas (see map) who opt to undertake measures, as well as bespoke farm, and landscape actions. Farmers participating in this approach will have the assistance of a Donegal Co-operation Project (CP) Team, who will assist agricultural advisors and participants with implementation of the scheme at a local level. Payments of up to €10,500 per annum are available to farmers who meet the eligibility criteria and carry out a range of actions.

Fields entered into the scheme will be scored using a Results Based Scoring system. The higher the score, the higher the payment. Farmers can undertake different actions to improve their scores. These include measures to improve water quality, improve farm infrastructure, protect native species, collaborate on commonage etc



M: 087 338 1548 E: info@acresdonegal.ie

W: www.acresdonegal.ie Follow us: /acresdonegal



An Roinn Talmhaíochta,
Bia agus Mara
Department of Agriculture,
Food and the Marine

IDP Inishowen
Development
Partnership

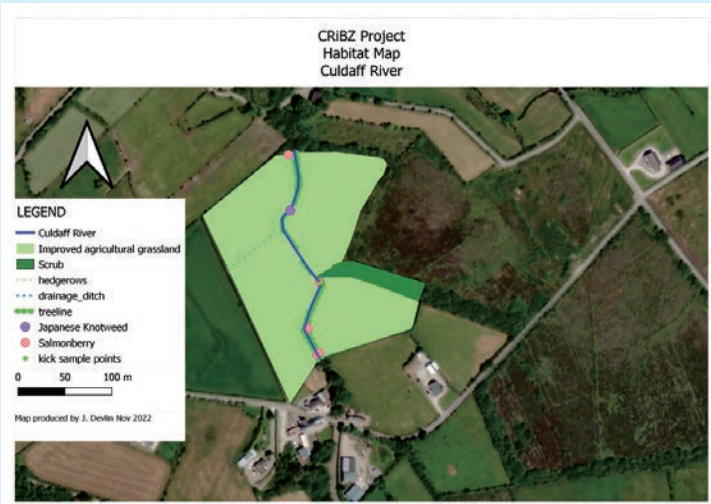
INISHOWEN
FARM INNOVATIONS

About the project

The CRiBZ scheme, based on the Culdaff River, Inishowen, Co. Donegal, aimed to promote actions to enhance farmland biodiversity through the creation of riparian buffers, fencing, invasive species control, water management and pollinator promotion. The project partnered with the Inishowen Uplands EIP, Inish Forestry Trees on the Land and the Culdaff River Community Angling Club

Participant Case Study 1

Farm predominantly sheep with small stream running through ground. Some good vegetation observed (21 species recorded in ecology survey), including 3 invasive plant species. Japanese knotweed infestation is small and farmer has agreed to try organic treatment using bioremediation following by planting of native trees.



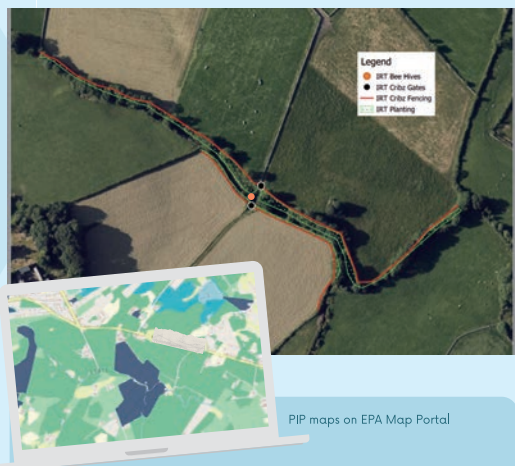
680m Fencing
4x gates
6 x single troughs
217m x 3m buffer
436m x 6m buffer
Invasive species control

On a second plot this farmer also installed one freedom hive, one horizontal hive for harvesting honey and installed a solar pump.



Participant Case Study 2

Intensive cattle and sheep farmer with high PIP-P and high PIP-N rankings. Two open access drinking points closed off on river. Good vegetative cover on one side of river with 38 species recorded. Potential for other side to improve but invasive species (salmonberry) needs to be tackled. Bank erosion noted at one point which can introduce sediment into stream. Agreement to install natural brush revetment in following summer.



Community events to create awareness

This farmer also hosted a freedom hive which attracted wild bees within 2 weeks.

Project Results

EIP Call - Farmland Biodiversity	Call 5
Project Ref.	LLOC5047
Project funding	€132,870
Number Participants	9
Distance riverbank fenced	4.3 km
Buffer zone created	10,773m ²
Number Solar pumps installed	7
Number of pasture pumps installed	4
Number of gates installed	20
Number Trees	6,000
Number Beehives	10
Number Wildflower seeds	125m ²

Invasive species detected: Salmonberry, Japanese knotweed, Himalayan balsam, Montbretia, Snowberry, Horsetail



Inishowen Rivers Trust

Connecting Communities,
Valuing Our Waters & Wildlife

Inishowen Rivers Trust

The Inishowen Rivers Trust is an environmental charity dedicated to the conservation, protection and enhancement of the natural waterbodies of Inishowen for the benefit of the environment and the local community. Anyone with an interest in caring for our rivers can get involved. We provide training opportunities, talks, citizen science and a chance to engage in projects that make a difference. The IRT is a grassroots initiative steered by a voluntary board of trustees. The Trust was formed as a CLG in 2016 and became a charity in 2018.

Contact: John Duffy
T: 083 150 5680
E: inishowenriverstrust@gmail.com

www.inishowenriverstrust.com
www.nfminishowen.com



An Roinn Tithíochta,
Rialtais Áitiúil agus Oidhreacht
Department of Housing,
Local Government and Heritage



This event has been supported by the Environmental Protection Agency (www.epa.ie) and the Local Authority Waters Programme

Company No. 587285 | Registered Charity No. 20153106 | CHY 22625