

Role of IFI and Statutory Derogations

Inland Fisheries Ireland (IFI) is a statutory body, formed on 1 July 2010 amalgamating the previous Regional and Central Boards into one national entity.

Function:

Protection, management and conservation of the inland fisheries resource.....and generally enforce the Inland Fisheries Acts.

This also includes the Habitats Directive. We have no specific remit for flood control or remediation of damage caused by a flood event.

But there is wriggle room for the purposes of this 'slow the flow' evening.

- *The Local Authorities (Works) Act, 1949*
- The Act has specific provisions in relation to emergency works concerning damage or the possibility of damage by flooding, landslide, subsidence or other similar occurrence. In such instances the relevant local authority may execute works to offer relief or protection. These works refer to responses necessary to prevent 'serious injury to any person, land or permanent construction'.
- Interestingly, this Act of 1949 also stipulates that works undertaken do not need to comply with the Fisheries Acts 1842 to 1944.
- However, this is somewhat diluted in that the local authority must take precautions and make provisions for the protection of fisheries. This means that any works proposed must be referred to the Minister for approval, including any specific provisions that he/she may stipulate in any particular case. Essentially, it is referred to IFI for conditional recommendation and signed off. These applications are dealt with as a priority and executed as such.
- Finally and most importantly, if in doubt lift the telephone and contact IFI if you propose to do instream or riparian works. We can give direction on what are the best options to suit everyone.
- Sometimes 'less is more'.
- Remember – instream works are confined to a 'window', usually the period July to September

Directive 2000/60/EC of the European Parliament and of the Council of 23 October 2000 establishing a framework for Community action in the field of water policy

1.1. Quality elements for the classification of ecological status - Rivers

Hydromorphological elements supporting the biological elements

- **Hydrological regime**
 - quantity and dynamics of water flow
 - connection to groundwater bodies
- **River continuity**
- **Morphological conditions**
 - river depth and width variation
 - structure and substrate of the river bed
 - structure of the riparian zone

The above need to be taken account of in planning for flood works or remedial measures

Preparation for upland planting



Changes to land use can alter flow patterns.





Debris accumulation at road bridge (Crana River)



Severe riparian damage (Crana River)

Erriff fishery displaying severe flood erosion





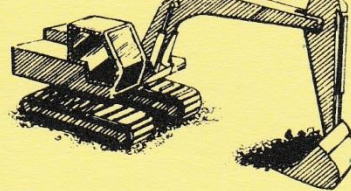
Remedial Works- still allowing for over-spill during major flood events

PLANT HIRE & FORESTRY CONTRACTOR

Letterfore - Recess - Co. Galway

Tel: 091 552566

Mobile: 087 6975411



Name: IFI INLAND FISHERIES IRELAND

Address: Teach breac earls island Galway

Tel: Date: 1-9-2016

Description	Total
Bill for work on errit	
River Rock armour and	
reinstatement of river	
on sites as agreed	
	€14608.00
VAT 13.5%	€1972.00

There is always a cost involved

VAT IE 5766023F

Sub Total €14608.00

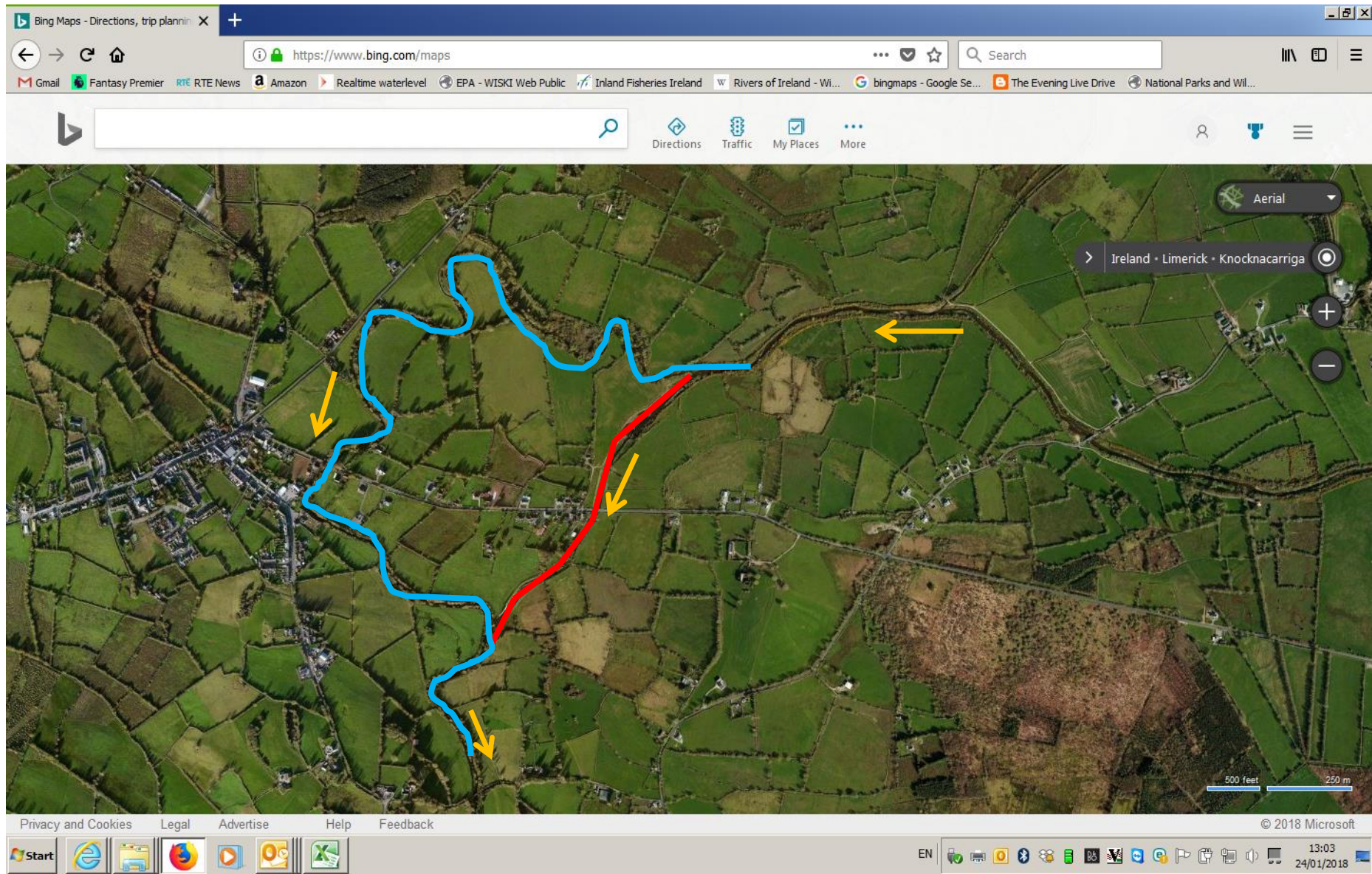
V.A.T. @ 13.5% €1972.00

INVOICE NO: 0830

TOTAL €16580.00

Somewhere in Swiss Alps....how do you manage for this blow-out?????





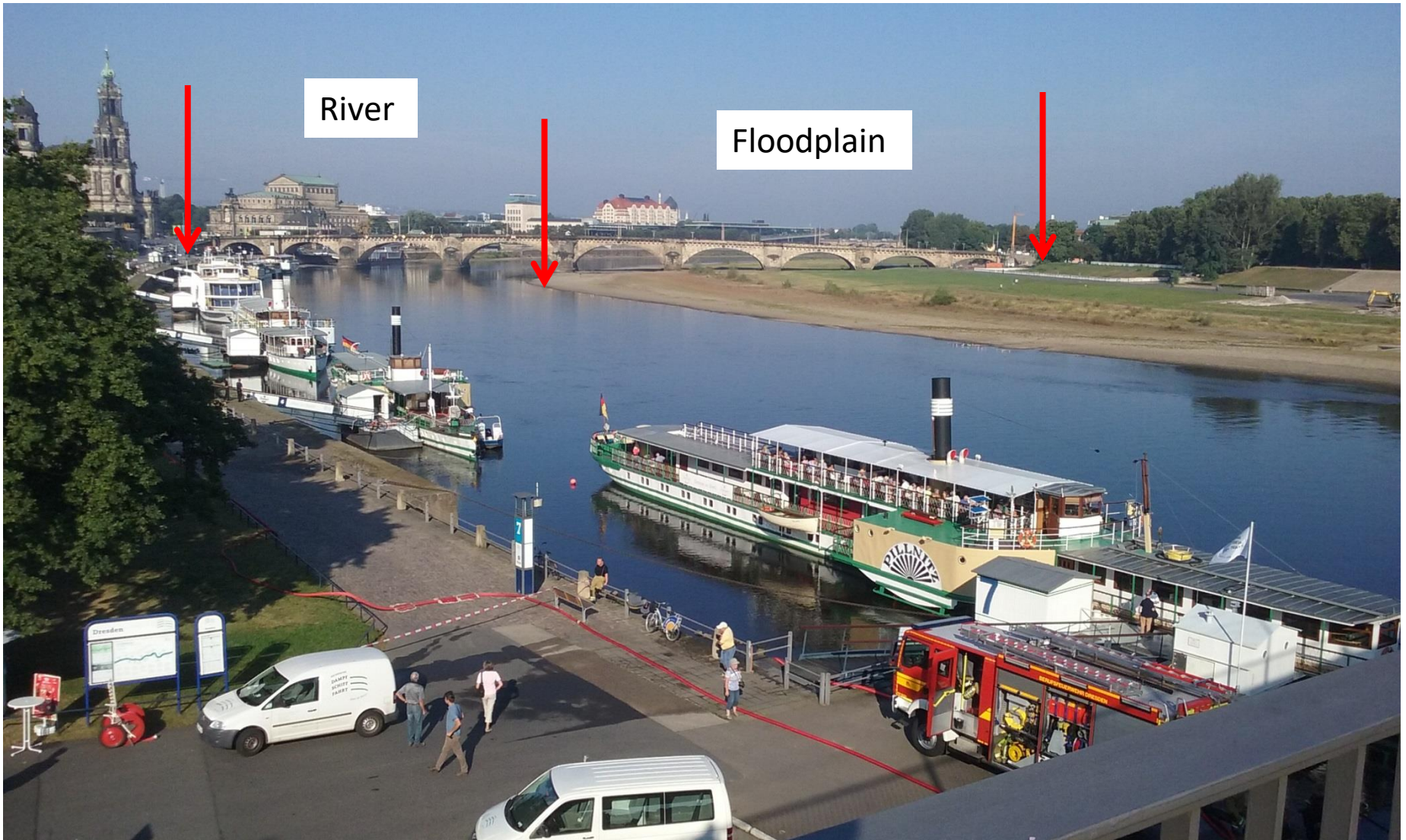
Flood defence – by-pass channel (red line) at Cappamore Flood Relief Scheme (OPW)

Urban Dublin – retaining a floodplain area



Dresden (De) city centre: River Elbe floodplain looking downstream

– see the extent of floodplain retained on RHS of photo –





Flood defence embankments – with some form of floodplain – internet download shows degree of allowing ‘room for the river’

Not just fish are affected



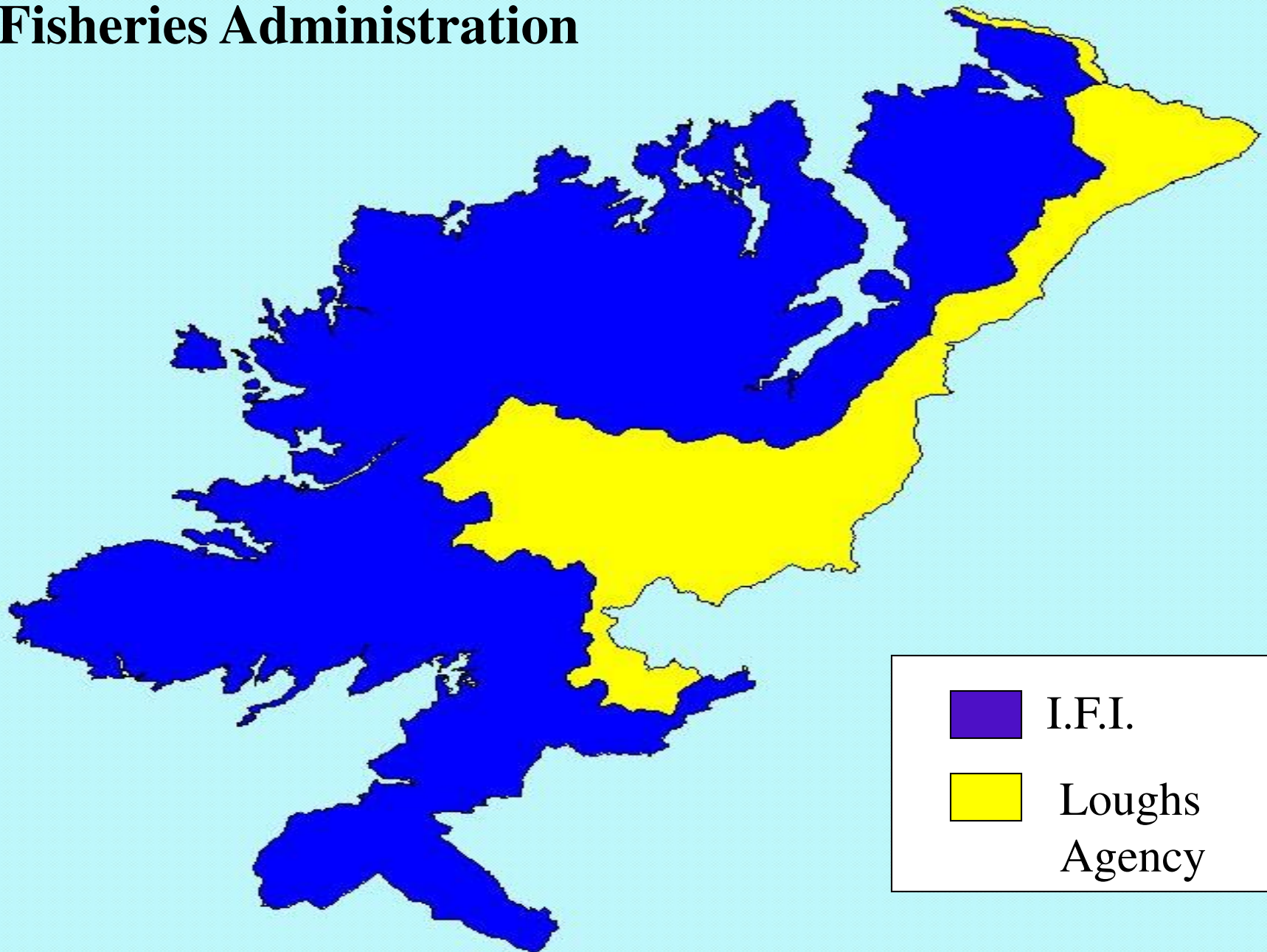
Man-made impoundment



'Dual Aims' O.P.W. / I.F.I.



Fisheries Administration



Flooding (causes and effects within a catchment)

Land usage

Drainage regimes

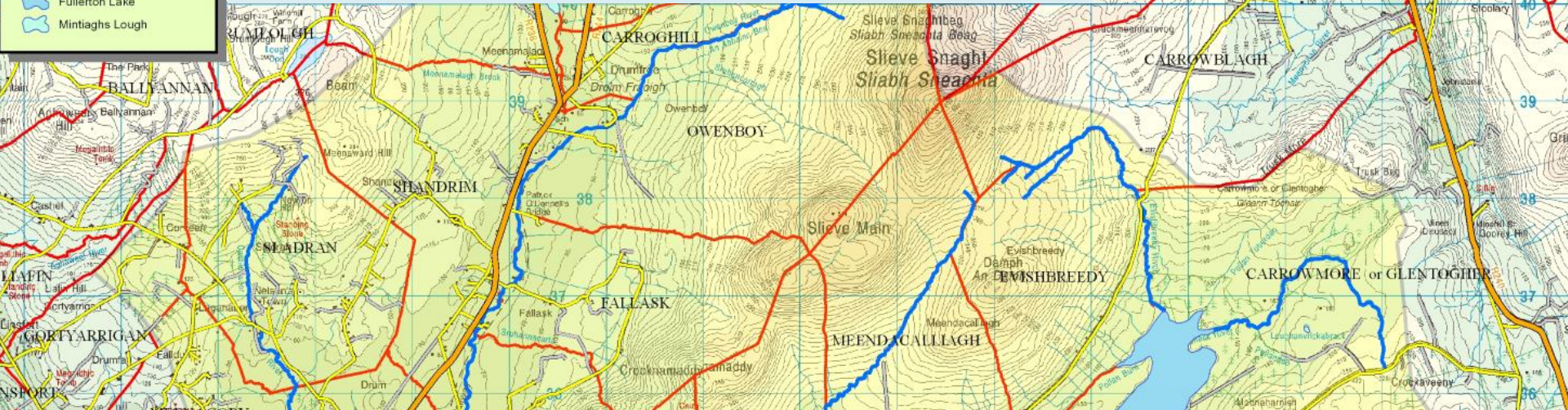
Weather patterns

Prevention

Repair/ re-instate?

Catchment (definition)

Crana River Catchment



- A river “Catchment” or “Basin” is defined as the area of land from which all surface run-off flows through a sequence of streams, rivers, and possibly, lakes into the sea at a single river mouth, estuary or delta. (Directive 2000/60/EC Water Framework Directive).

Peat slide in Glen River Catchment
(top of slippage area).



Middle section clearly showing incisions left by machine after 'peat extraction'



Leading edge of slide covers road but does not reach river

River



Preparing for clean up operation



Bank stabilization project (Glen River)

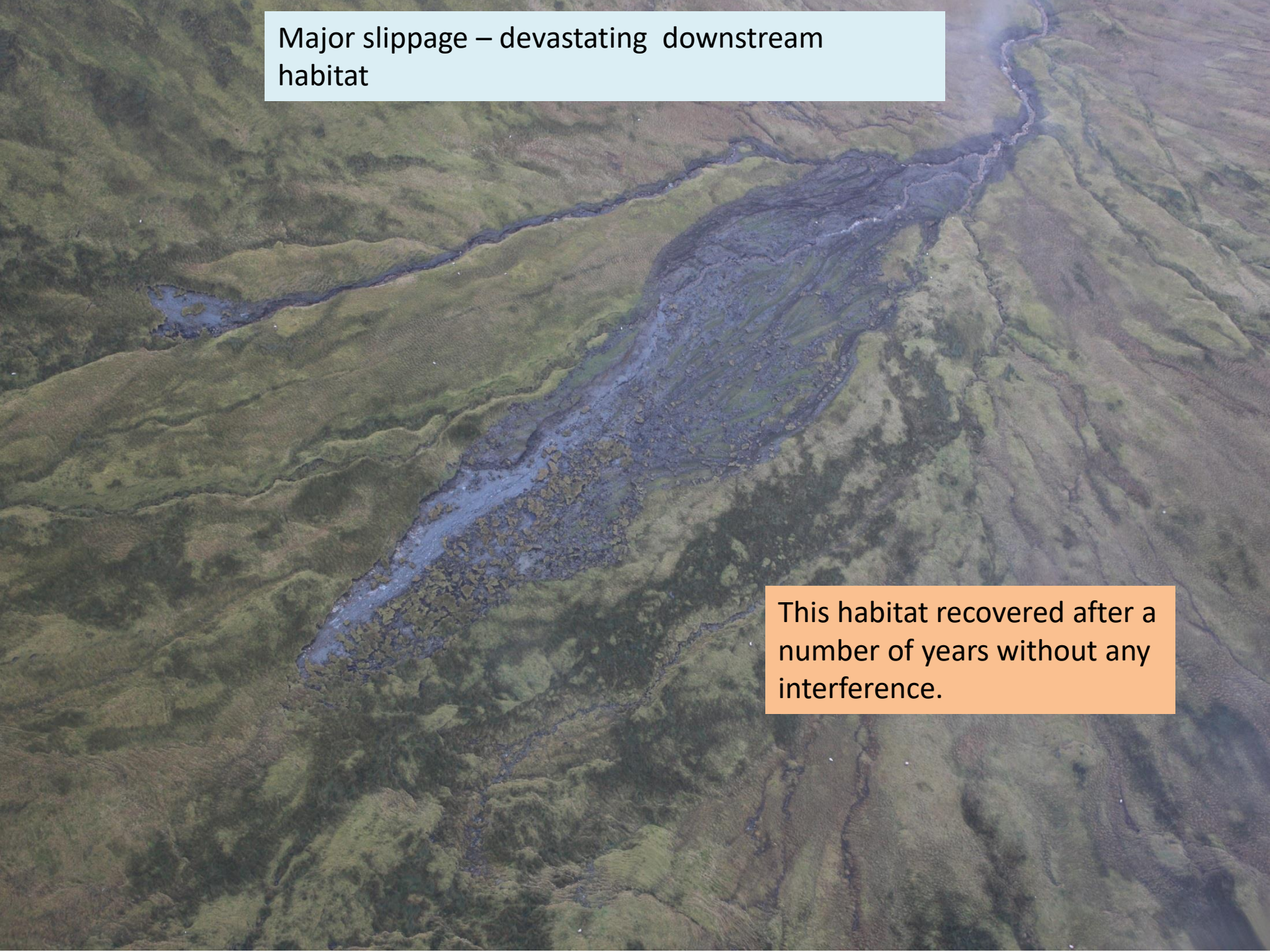


Project underway (using 'Gabion baskets')



Major slippage – devastating downstream habitat

This habitat recovered after a number of years without any interference.



Erosion at access structure

Best option – willow weave



Bank erosion following flood event



Rock armour in place (still holding-just about)



Riparian zone fencing (Gweebarra)



Gabion Baskets (Gweebarra River)



Typical 'selective bank clearance



Typical rock armour (Lowerymore River)



Even the best laid plans !



Observations

Very few quick fix solutions.

Some events can't be prevented and some things can't be protected.

Post event, most habitats will revert to normal with little or no interference.



ACKNOWLEDGEMENTS

Drs. Jimmy King & Martin O'Grady
(IFI- Citywest)

Professor Martin O Grady

R.I.P. 14TH February 2018

Martin was one of Ireland's most recognised fisheries biologists. He worked tirelessly to improve our understanding of wild fisheries, particularly brown trout. He was a valued colleague and friend who will be sadly missed by all who knew him either professionally or privately.

