

EELS IN INISHOWEN

BY TOMÁS LAWRENCE

MILL RIVER CONSERVATION GROUP



etb
Bord Oideachais agus
Oiliúna Dhúin na nGall
Donegal Education and
Training Board



IDP
Inishowen
Development
Partnership



**Self Help
Africa**

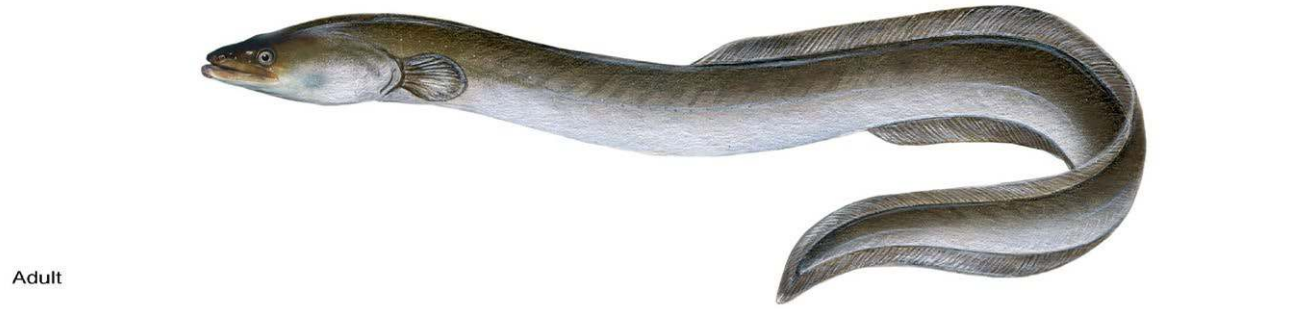


Irish Aid
Department of Foreign Affairs
An Roinn Gnóthaí Eachtracha

Trócaire

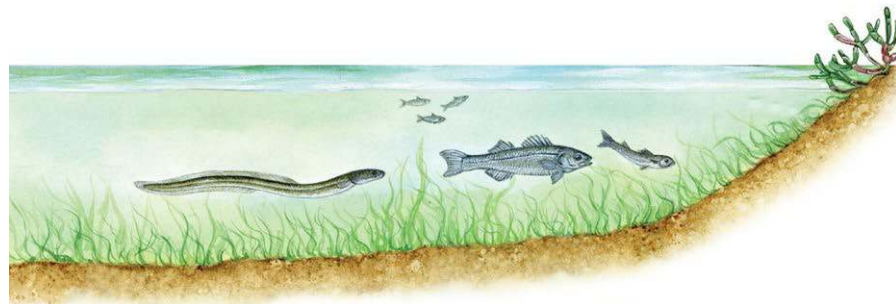
LIFE CYCLE

- Catadromous fish characterised by a snake shaped body with a continuous dorsal, anal and caudal fin atrophy
- Size 60 -80cm, rarely reaching more than 1m.



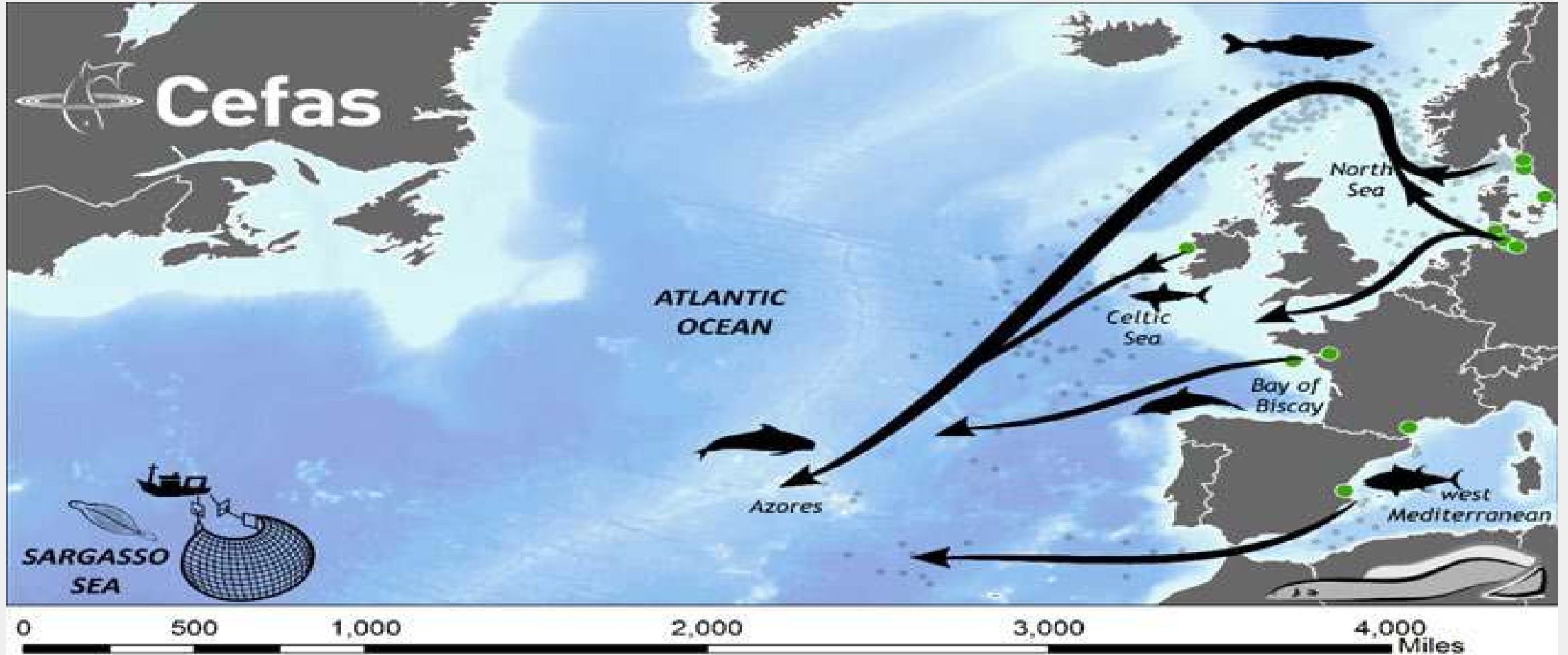
Leptocephali

European eel (*Anguilla anguilla*)



Source: Dreamstime, Marina And Anna Luisa Durante

MIGRATION



Source: Centre for Environment, Fisheries and Aquaculture Science (Cefas)

HABITAT

Food source.

Eels feed on a variety of food depending on their stage of growth , in the early stages of life they feed on insect larva, macroinvertebrates, worms , slugs and, as the eel grows larger it turns to predating small fish, even their own species .

The eel's habitat requirements .

Elvers require silty areas of rivers, but larger eels require structures such as submerged roots, debris and undercut riverbanks .

Small eels are quite capable of maneuvering through submerged root systems where small spaces between structures exist.

THREATS

Habitat Destruction

- Dredging of river beds ,
- removal of large amounts of woody debris
- Declining water quality.

Anthropogenic Issues

- Dams
- Illegal fishing

Diseases & Viruses

- Anguillid Herpesvirus -AngHV -1
- Eel Virus European X (EVEX)
- *Anguillicoloides crassus*

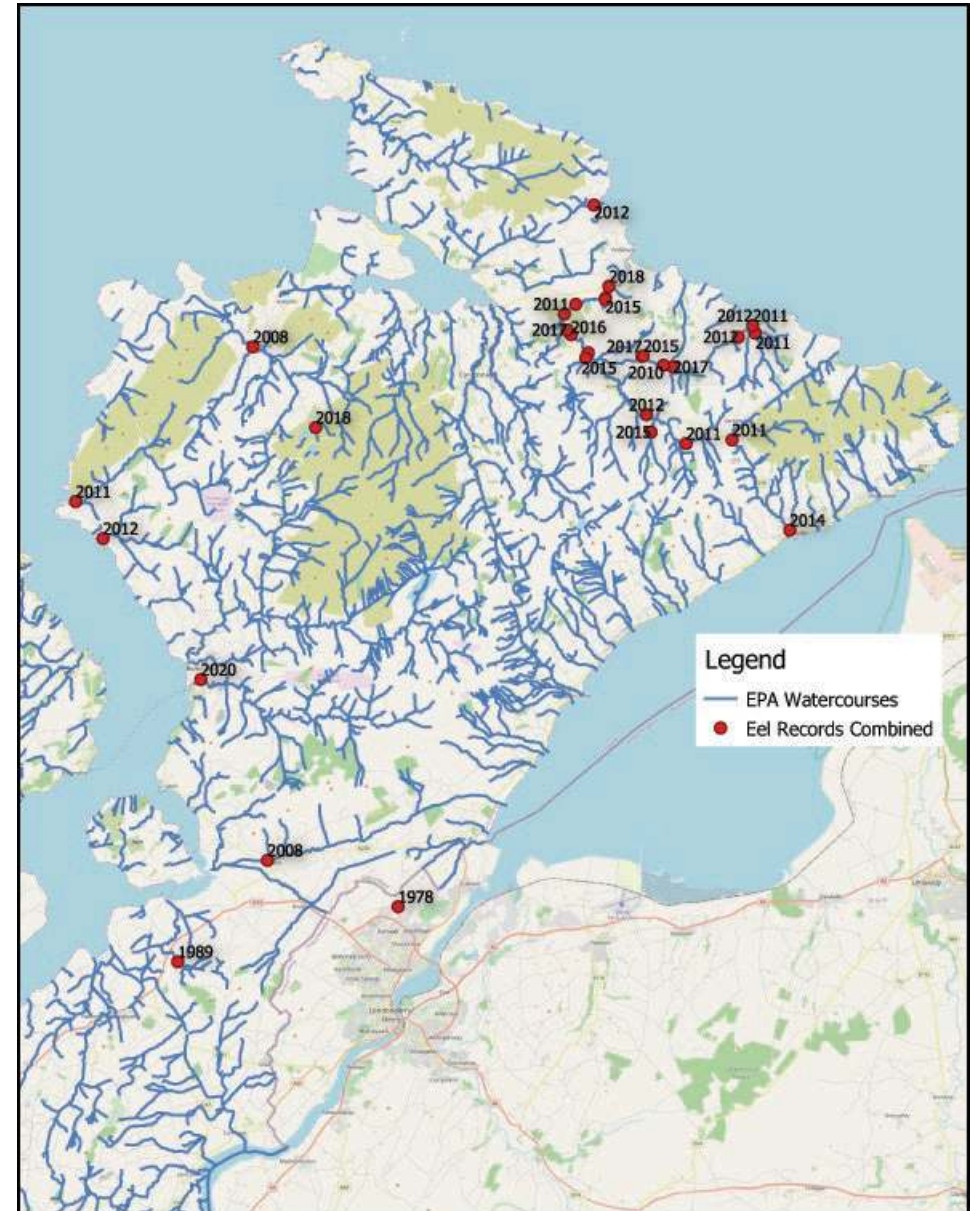


Source: IRT, Glass eel Culdaff River, 2018

DISTRIBUTION IN INISHOWEN

Data collated from:

- Fisheries authorities (Inland Fisheries Ireland and Loughs Agency)
- Personal observations
- Personal communications



Source Map: Collated data on EPA Map

The Future

- Regular monitoring of eels within suitable water bodies in Inishowen .
- Recording up to date information on species annually to build a database.
- Engage with local community through events and create awareness of the eels in Inishowen .
- Using nature based solutions to restore the natural habitat of our rivers.
- Identifying negative impacts within the rivers of Inishowen and liaise with local and national authorities to establish the best practices to overcome these impacts and to protect the natural habitat of the eel.



Source: IRT, adult eel Culdaff River, 2017

THANK YOU

- Study commissioned by Inishowen Rivers Trust funded under the Seeds of Change Grant Scheme operated by Donegal ChangeMakers
- Special thanks to everyone who contributed their information or data to this report



Climate



Oceans